

CITY OF LOCKPORT
COMMON COUNCIL PROCEEDINGS

Lockport Municipal Building

Regular Meeting
Official Record

April 8th, 2026
6:00 P.M.

Mayor John Lombardi III called the meeting to order.

ROLL CALL

The following Common Council members answered the roll call:

Aldermen Craig, Wyche, O'Malley, Fogle, Wiley and Kirchberger

INVOCATION

ANNOUNCEMENTS

RECESS

Recess for public input.

040826.1

APPROVAL OF MINUTES

On motion of Alderman Craig seconded by Alderman Kirchberger the minutes of the Regular meeting of March 25th, 2026 are hereby approved as printed in the Journal of Proceedings. Ayes 5.

FROM THE MAYOR

Appointments:

3/27/2026 Adam J. Heiman has been appointed to Chief Compost Plant Operator for the City of Wastewater Treatment Plant effective February 18th, 2026. Said appointment is permanent and subject to the City of Lockport Municipal Civil Service Rules and Regulations.

FROM THE CITY CLERK

The Clerk submitted payrolls, bills for services and expenses, and reported that the Department Heads submitted reports of labor performed in their departments.

Reviewed by the Finance Committee.

Communications (which have been referred to the appropriate City officials)

Letter to Mayor Lombardi from the Arbor Day Foundation as they celebrate the 50th Anniversary of Tree City USA program, notifying and congratulating the City of Lockport on receiving a 2025 Tree City USA recognition.

MOTIONS & RESOLUTIONS

040826.2

By Alderman Craig:

Resolved, that the Mayor and City Clerk be authorized to issue orders in favor of the claimants for payrolls, bills and services to be paid on April 9th, 2026.

Seconded by Alderman O'Malley and adopted. Ayes 5.

040826.3

By Alderman O'Malley:

Resolution Authorizing a Professional Services Agreement with GPRS for Leak Detection Services and Appropriating Funds from Capital Project H204

Whereas, the City of Lockport operates and maintains an extensive water distribution system; and

Whereas, the City has identified the need to locate potential water leaks within the system in order to reduce water loss, improve system efficiency, and prevent further infrastructure deterioration; and

Whereas, Ground Penetrating Radar Systems, LLC (GPRS) has submitted a proposal to perform leak detection services utilizing specialized equipment and techniques to identify the location of known or suspected leaks within the City's water system; and

Whereas, said services generally consist of listening for and pinpointing underground water leaks using acoustic and electronic detection methods, allowing City staff to more efficiently identify and repair problem areas; and

Whereas, the total cost of the proposed services is an amount not to exceed \$20,000; and

Whereas, these services constitute professional and technical services which are not subject to competitive bidding requirements pursuant to the City's procurement policy and applicable New York State law; and

Whereas, funding for said services is available within the City's Water Capital Project H204;

Now, therefore, be it resolved, that the Common Council of the City of Lockport hereby authorizes the Mayor to enter into an agreement with Ground Penetrating Radar Systems, LLC (GPRS) for leak detection services in an amount not to exceed \$20,000; and be it further

Resolved, that the Common Council hereby determines that such services are of a professional and technical nature and are therefore exempt from competitive bidding requirements; and be it further

Resolved, that the expenditure of up to \$20,000 is hereby authorized from Capital Project H204 to fund said services; and be it further

Resolved, that this resolution shall take effect immediately.

Seconded by Alderman Craig and adopted. Ayes 4. Nay – Fogle.

040826.4 Withdrawn

040826.5

By Alderman Kirchberger:

Resolved, that the Mayor, subject to Corporation Counsel approval is hereby authorized to enter into Memorandum of Agreement with the Department Head Association related to the Grade and Step for the Director of Personnel.

Seconded by Alderman O'Malley and adopted. Ayes 5.

040826.6

By Alderman Craig:

Resolved, that the Mayor, subject to Corporation Counsel approval is hereby authorized to enter into Memorandum of Agreement with the Department Head Association related to the Chief Building Inspector.

Seconded by Alderman Kirchberger and adopted. Ayes 5.

040826.7

By Alderman Craig:

Whereas, Bell Atlantic Mobile Systems LLC, DBA Verizon, has requested a variance from the City of Lockport to construct and operate a "micro cell" wireless telecommunications facility on a replacement utility pole located in the highway right-of-way in front of 485 East Avenue; and

Whereas, the Planning Board approved the application on Monday April 6th at their regularly scheduled meeting:

Now, therefore, be it resolved, that the City of Lockport Common Council hereby authorizes Bell Atlantic Mobile Systems LLC to construct and operate a "micro cell" wireless telecommunications facility on a replacement utility pole in front of 485 East Avenue in The City of Lockport pending the filing of a certificate of insurance with the City Clerk naming the City of Lockport as additional insured, leaving the City free and clear of all liability.

Seconded by Alderman Kirchberger and adopted. Ayes 5.

040826.8

ADJOURNMENT

At 6:08pm Alderman O'Malley moved the Common Council be adjourned until 6:00pm Wednesday, April 22nd, 2026.

Seconded by Alderman Fogle and adopted. Ayes 6.

EMILY STODDARD
City Clerk



CITY OF LOCKPORT, NEW YORK

Lockport Municipal Building
One Locks Plaza
Lockport, NY 14094

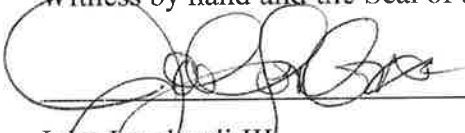
March 27, 2026

TO: Common Council

Under and by virtue of the authority conferred on me by the charter of the City of Lockport, New York, I, John Lombardi III, Mayor of said City, do hereby appoint Adam J. Heiman to Chief Compost Plant Operator for the City of Lockport Wastewater Treatment Plant effective February 18, 2026.

Said appointment is permanent and subject to the City of Lockport Municipal Civil Service Rules and Regulations.

Witness by hand and the Seal of the City of Lockport this 27th day of March 2026.



John Lombardi III
Mayor

cc: A. Heiman
C. Peacock
City Clerk



211 N. 12th St.
Lincoln, NE 68508
arborday.org

Mayor John Lombardi
1 Locks Plaza
Lockport, NY 14094

Dear Mayor John Lombardi,

On behalf of the Arbor Day Foundation as we celebrate the 50th Anniversary of the Tree City USA program, I'm happy to extend my warmest congratulations to Lockport on receiving a 2025 Tree City USA recognition. This well-deserved recognition is a testament to your community's unwavering commitment to the planting, care, and celebration of trees.

In an era where cities and towns are facing increasing challenges related to air quality, public health, and climate resilience, nurturing urban forests has never been more important. By prioritizing tree stewardship, you've not only helped enhance Lockport's livability, but you've also invested in a healthier, more sustainable future for your residents.

The Arbor Day Foundation's Tree City USA program has a long legacy of supporting a nationwide network of passionate organizers and tireless tree planters. Since 1976, we've recognized thousands of communities of all sizes that have created and maintained green spaces. While we all work in different corners of the country, we are working in unison to create positive change through trees.

To be named a Tree City USA is to be part of something bigger.

We hope you are as excited as we are to share this accomplishment with your local media and your residents. To that end, we've included a press release for you to distribute at your convenience. A digital copy of the press release and other materials can be found in the Tree City USA Resource Center online at arborday.org/TreeCitytoolkit.

Once again, congratulations on this outstanding achievement and thank you for your dedication to Lockport's tree canopy. We believe cities that take care of their trees, take care of their people.

Best Regards,

A handwritten signature in black ink, appearing to read "Dan Lambe".

Dan Lambe
Chief Executive of the Arbor Day Foundation



FOR IMMEDIATE RELEASE

Lockport Contact:

{Name}

{Phone}

{Email}

Arbor Day Foundation Contact:

Jasmine Putney

Arbor Day Foundation

402-216-9307

jputney@arborday.org

LOCKPORT EARNS 2025 TREE CITY USA RECOGNITION FROM ARBOR DAY FOUNDATION

LOCKPORT, New York (2/13/2026) – The Arbor Day Foundation named Lockport a 2025 Tree City USA in honor of its commitment to plant, grow, and maintain trees to benefit its community.

The Arbor Day Foundation is a global nonprofit with a mission to inspire people to plant, nurture and celebrate trees. Its network of more than a million supporters and partners has helped the organization plant more than 500 million trees in forests and communities across more than 60 countries since 1972. The Tree City USA program has recognized cities and towns that leverage urban forestry to enhance the livability and sustainability of their local area for over 40 years.

"We all have a role to play in shaping our future and tree champions like Lockport are leading the way," said Michelle Saulnier, Vice President of Programs at the Arbor Day Foundation. "Trees are critical infrastructure, building resiliency and fostering good health in our nation's cities. We're proud Lockport is among the Arbor Day Foundation's growing network of communities dedicated to creating positive impact through trees."

In cities and neighborhoods, trees are proven to help mitigate the urban heat island effect, reduce stormwater runoff, improve air quality, and boost mental and physical health. When the right trees are planted in the right places, they can also reduce traffic noise, increase property values, and lower energy costs for homeowners.

{OPTIONAL QUOTE FROM CITY OFFICAL/LOCAL TREE CITY REPRESENTATIVE}

To earn Tree City USA recognition, a city must uphold four core standards including maintaining a tree board or department, having a community tree ordinance, spending at least \$2 per capita on urban forestry, and participating in an Arbor Day celebration.

The Arbor Day Foundation's Tree City USA program is operated in partnership with the National Association of State Foresters and the USDA Forest Service. To learn more about the program or how to apply, visit arborday.org.

About the Arbor Day Foundation

The Arbor Day Foundation is a global nonprofit inspiring people to plant, nurture, and celebrate trees. They foster a growing community of more than 1 million leaders, innovators, planters, and supporters united by their bold belief that a more hopeful future can be shaped through the power of trees. For more than 50 years, they've answered critical need with action, planting more than half a billion trees alongside their partners. And this is only the beginning.

The Arbor Day Foundation is a 501(c)(3) nonprofit pursuing a future where all life flourishes through the power of trees. Learn more at arborday.org.

City Clerk

From: Kristin Schubring <kschubring@lockportny.gov>
Sent: Wednesday, April 8, 2026 8:42 AM
To: deputyclerk@lockportny.gov
Cc: cityclerk@lockportny.gov
Subject: AP Fund Totals 4/8/26

Hello,

Invoices to be approved at the meeting on 4/8/26 are as follows:

Fund A General - \$212,735.73
Fund CL Refuse & Recycling - \$112,823.53
Fund FX Water - \$94,201.63
Fund G Sewer - \$86,900.57
Fund MS Health Insurance - \$2,373.95
Total - \$509,035.41

Please let me know if you have any questions.
Thanks!



Kristin Bernardi Schubring
Principal Account Clerk
Finance Department
City of Lockport, NY
716.439.6620

City of Lockport

I HEREBY CERTIFY that the persons named in this payroll are employed solely in and have actually performed the duties of positions and employments indicated for the period ending 3/12/26, PAID on date 3/19/26 is approved at dollars, \$ 653,759.52.
 Civil Service Mary Pat Gilbert

Pay Day Register

Pay Date Range 02/27/26 - 03/12/26
 Pay Batch 03/19/26

Pay Batch 03/19/26 Total

Employees in Pay Batch 217

Female Employees in Pay Batch 44

Hours Description	Hours	Gross	Withholdings and Deductions	Gross Base	Benefits	Gross Base
207A Disability - 207A Disability	160.0000	1,844.10	Gross	653,759.52	Health Ins 298 Class 2 Family	33,772.29 .00
ALWP - Administrative Leave with BERV - Bereavement	80.0000	3,462.70	Imputed Income		Health Ins 298 Class 2 Single	11,422.46 .00
CMPE 1.0 - Comp Earned @ 1.0	47.0000	1,700.64	Federal	69,763.91	Health Ins 298 Class 3 Family	85,338.53 .00
CMPE 1.5 - Comp Earned @ 1.5	144.2500	.00	FICA	39,559.58	Health Ins 298 Class 3 Single	9,361.92 .00
CMPU - Comp Time Used	8.5000	.00	Medicare	9,251.95	Health Ins 298 Class 4 Family	8,314.76 .00
EDAY - Extra Day	296.0000	10,539.42	New York State	31,518.89	Health Ins 298 Class 4 Single	2,936.64 .00
FHDE - Floating Holiday Earned	244.0000	10,613.14	3% - RET ERS TIER 6	2,173.96	Total	\$151,146.60
FHDU - Floating Holiday Used	457.1700	.00	3% - RET ERS TIER 6 OT	75.73	Employer Taxes	Gross Base
FLSA - FLSA	172.0000	5,059.37	3% - RET PF TIER 6	501.06	FICA	39,559.58 638,057.16
FMLS - FMLA Sick Used	.0000	241.90	3% - RET PF TIER 6 OT	46.46	Medicare	9,251.95 638,057.16
HOLW - Holiday Worked	16.0000	815.64	3.5% - RET ERS TIER 6	1,723.65	Total	\$48,811.53
HOLW - Holiday Worked	8.0000	665.56	3.5% - RET ERS TIER 6 OT	161.95	Workers' Comp	Gross Base
LONG - Longevity Payment	8.0000	30,159.84	3.5% - RET PF TIER 6	3,056.11	Workers Compensation - General	15,393.60 482,507.82
LWOP - Leave Without Pay	8.0000	.00	3.5% - RET PF TIER 6 OT	383.87	Workers Compensation - Sewer	1,652.09 53,686.21
OOT - Out of Title	8.0000	.00	4.5% - RET ERS TIER 6	568.31	Workers Compensation - Water	1,448.56 49,976.42
OT 1.0 - Overtime at Straight 1.0	586.0000	27,886.09	4.5% - RET ERS TIER 6	568.31	Workers Compensation 50%	342.08 6,080.37
OT 1.5 - Overtime @ 1.5	31.0000	895.34	4.5% - RET ERS TIER 6 OT	3.20	Total	\$18,836.33
OT 1.5 SHIFT 10% - OT @ 1.5	798.5000	44,114.49	4.5% - RET PF TIER 6	2,639.09	Direct Deposits	Amount
OT 1.5 SHIFT 15% - OT @ 1.5	39.5000	1,886.09	4.5% - RET PF TIER 6 OT	286.44	Armed Forces Bank	1,529.79
PRSU - Personal Used	60.0000	2,913.90	457 % Deduction	8,126.85	Bancorp Bank	1,467.62
REG - Regular	257.5000	10,338.95	457 Flat Dollar Deduction	12,855.00	Bank of Akron	3,066.78
REG PT - Regular Part Time	12,407.0000	435,016.66	5.75% - RET ERS TIER 6	222.55	Bank of America	8,796.32
REG SHIFT 10% - Regular Shift	197.7500	6,697.12	5.75% - RET PF TIER 6	3,933.29	BANK OF AMERICA (2)	4,249.54
REG SHIFT 15% - Regular Shift	168.0000	5,489.26	5.75% - RET PF TIER 6 OT	328.92	BANK OF AMERICA (4)	1,494.32
REGS - Regular Seasonal	384.0000	13,294.16	6% - RET PF TIER 6	266.23	Bank on Buffalo	2,842.69
RET REF1 - Ret Refund Contrib &	80.0000	1,280.00	AFLAC POSTTAX	325.92	Capital One 360	2,985.03
RGS - Regular - Salary	.0000	235.30	AFLAC PRETAX	415.66	Chase Bank	3,901.38
SAL - Salary	70.0000	.00	ALLSTATE POSTTAX	513.60	Chase Bank (2)	1,665.73
SAL PT - Salary Part Time	.0000	3,806.51	ALLSTATE PRETAX	548.24	Chime	1,552.61
SCKE - Sick Earned	.0000	1,865.37	Child Support - Amount	2,579.70	Citizens Bank	17,815.50
SCKU - Sick Used	1,952.8750	.00	COLONIAL LIFE POSTTAX	95.21	Cornerstone Comm FCU	126,339.54
VACE - Vacation Earned	453.0000	15,362.27	COLONIAL LIFE PRETAX	32.88	Discover Bank	800.00
VACU - Vacation Used	126.4217	.00	Firefighter Life Ins	162.83	Encompass Niagara FCU	195.00
Total	505.5000	17,575.70	FSA PRETAX	810.83	ESL FCU	2,058.35
	19,757.9667	\$653,759.52	Health Ins 298 Class 2 Family	3,163.68	Evans Bank	550.00
			Health Ins 298 Class 2 Single	1,168.24	Financial Trust FCU	100.00
			Health Ins 298 Class 3 Family	2,609.35		
			Health Ins 298 Class 3 Single	759.12		
			Health Ins 298 Class 4 Family	988.49		
			Health Ins 298 Class 4 Single	372.24		

I HEREBY CERTIFY that the persons named in this payroll are employed solely in and have actually performed the duties of positions and employments indicated for the period ending

3/26/26, PAID on date 4/2/26, is approved at dollars, \$ 743,611.92
Civil Service Mary Pat Jubbert

Pay Day Register

Pay Date Range 03/13/26 - 03/26/26

Pay Batch 04/02/26

Pay Batch 04/02/26 Total

Employees in Pay Batch 219

Female Employees in Pay Batch 45

Hours Description	Hours	Gross	Withholdings and Deductions	Gross Base	Benefits	Gross Base	
207A Disability - 207A Disability	160.0000	1,844.10	Gross	743,611.92	Health Ins 298 Class 2 Family	34,989.06 .00	
ALWP - Administrative Leave with	80.0000	3,462.70	Imputed Income		Health Ins 298 Class 2 Single	10,989.79 .00	
BERV - Bereavement	48.0000	1,741.38	Federal	102,877.75	693,171.05	Health Ins 298 Class 3 Family	85,338.53 .00
BRIEF - Briefing/Debriefing	.0000	704.15	FICA	45,174.62	728,623.58	Health Ins 298 Class 3 Single	9,720.37 .00
CMPBS - Comp Buy Out -	1,557.7500	67,426.31	Medicare	10,565.03	728,623.58	Health Ins 298 Class 4 Family	8,314.76 .00
CMPE 1.0 - Comp Earned @ 1.0	225.8750	.00	New York State	40,402.98	707,463.84	Health Ins 298 Class 4 Single	2,936.64 .00
CMPE 1.5 - Comp Earned @ 1.5	4.0000	.00	3% - RET ERS TIER 6	798.13	26,603.89	HRA Family Flat	500.00 .00
CMPU - Comp Time Used	399.0000	14,865.75	3% - RET ERS TIER 6 OT	48.62	1,620.09	Total	\$152,789.15
EDAY - Extra Day	182.0000	7,958.19	3% - RET PF TIER 6	77.67	2,589.14	152,289.15	
FHDB - Floating Holiday Buy Out	40.0000	1,802.80	3% - RET PF TIER 6 OT	39.32	1,310.75	Employer Taxes	Gross Base
FHDBS - Float Hol Buy Out -	616.0000	26,663.21	3.5% - RET ERS TIER 6	1,803.17	51,518.53	FICA	45,174.62 728,623.58
FHDU - Floating Holiday Used	236.0000	8,079.83	3.5% - RET ERS TIER 6 OT	134.41	3,840.32	Medicare	10,565.03 728,623.58
FLSA - FLSA	.0000	7.56	3.5% - RET PF TIER 6	1,381.76	39,478.55	Total	\$55,739.65
LONG - Longevity Payment	.0000	550.00	3.5% - RET PF TIER 6 OT	116.42	3,326.25	Workers' Comp	Gross Base
LWOP - Leave Without Pay	8.0000	.00	4.5% - RET ERS TIER 6	2,045.18	45,448.12	Workers Compensation - General	15,735.68 489,197.96
MILI - Military Time	16.0000	815.64	4.5% - RET ERS TIER 6 OT	189.44	4,209.70	Workers Compensation - Sewer	1,652.09 52,948.60
OOT - Out of Title	574.0000	27,453.45	4.5% - RET PF TIER 6	3,017.34	67,052.63	Workers Compensation - Water	1,448.56 50,872.88
OOT OT 1.5 - Out of Title OT at	32.0000	1,454.84	4.5% - RET PF TIER 6 OT	331.68	7,370.89	Workers Compensation 50%	342.08 6,080.37
OT 1.0 - Overtime at Straight 1.0	33.0000	1,070.88	457 % Deduction	8,304.74	124,249.63	Total	\$19,178.41
OT 1.5 - Overtime @ 1.5	1,152.7500	66,680.49	457 Flat Dollar Deduction	12,855.00	.00	Direct Deposits	Amount
OT 1.5 SHIFT 10% - OT @ 1.5	39.0000	1,853.50	5.75% - RET ERS TIER 6	968.17	16,837.81	Armed Forces Bank	1,470.16
OT 1.5 SHIFT 15% - OT @ 1.5	56.0000	2,893.42	5.75% - RET ERS TIER 6 OT	137.28	2,387.53	Bancorp Bank	1,852.66
PRSU - Personal Used	201.5000	7,773.59	5.75% - RET PF TIER 6	3,591.77	62,464.91	Bank of Akron	3,307.97
REG - Regular	12,183.0000	426,522.21	5.75% - RET PF TIER 6 OT	699.52	12,165.41	Bank of America	7,081.28
REG PT - Regular Part Time	194.0000	6,588.34	6% - RET PF TIER 6	1,973.66	32,894.04	Bank of America	7,081.28
REG SHIFT 10% - Regular Shift	152.0000	4,968.76	6% - RET PF TIER 6 OT	531.02	8,850.31	BANK OF AMERICA (2)	2,280.97
REG SHIFT 15% - Regular Shift	376.0000	12,985.12	AFLAC POSTTAX	325.92	.00	BANK OF AMERICA (4)	2,013.48
REGS - Regular Seasonal	136.0000	2,545.74	AFLAC PRETAX	415.66	.00	Bank on Buffalo	46,283.86
RGS - Regular - Salary	70.0000	.00	ALLSTATE POSTTAX	504.08	.00	Capital One 360	2,943.27
SAL - Salary	.0000	3,806.51	ALLSTATE PRETAX	548.24	.00	Chase Bank	1,953.87
SAL PT - Salary Part Time	.0000	1,865.37	Child Support - Amount	2,579.70	.00	Chase Bank (2)	2,618.24
SCKU - Sick Used	557.0000	18,990.61	COLONIAL LIFE POSTTAX	95.21	.00	Chime	2,515.51
VACE - Vacation Earned	40.0000	.00	COLONIAL LIFE PRETAX	32.88	.00	Citizens Bank	15,914.86
VACU - Vacation Used	574.5000	20,237.47	FSA PRETAX	810.83	.00	Cornerstone Comm FCU	131,574.37
Total	19,943.3750	\$743,611.92	Health Ins 298 Class 2 Family	3,163.68	.00	Discover Bank	800.00
			Health Ins 298 Class 2 Single	1,124.97	.00	Encompass Niagara FCU	195.00
			Health Ins 298 Class 3 Family	2,609.35	.00	ESL FCU	1,364.07
			Health Ins 298 Class 3 Single	822.38	.00	Evans Bank	550.00
			Health Ins 298 Class 4 Family	988.49	.00		

9081.11

City of Lockport - Resolution Request Form

Agenda Description: Leak Detection Contract Approval							
Presented By: DPC/Dennis McNamara	Date Submitted: 4/6/2026						
Topic Area (Select Most Applicable Option):							
Community Event Budget Amendment Contract Approval Donation Acceptance Grant Application / Award Fund Utilization Request	<table border="1" style="width: 100%; border-collapse: collapse;"> <tr><td> </td></tr> <tr><td> </td></tr> <tr><td style="text-align: center;">✓</td></tr> <tr><td> </td></tr> <tr><td> </td></tr> <tr><td> </td></tr> </table>			✓			
✓							
Local Law Change Community Development Community Event Engineering Process Code and Planning Other	<table border="1" style="width: 100%; border-collapse: collapse;"> <tr><td> </td></tr> <tr><td> </td></tr> <tr><td> </td></tr> <tr><td> </td></tr> <tr><td> </td></tr> <tr><td> </td></tr> </table>						
<i>Please provide to Clerk at least 9 calendar days prior to Council meeting. Otherwise request will go to following meeting.</i>							
Summary of Resolution:							
<p>This resolution allows the City to hire GPRS to locate underground water leaks more quickly and accurately. This will help reduce water loss and prevent larger infrastructure issues. The cost is up to \$20,000, funded through Capital Project H205, and does not require bidding due to the specialized nature of the service.</p> <p>What this reso does: Authorizes hiring GPRS, Approves up to \$20K in funding (H205) & Confirms no bidding required</p>							
Explanation of Attachments:							
1) Reso 2) Contract 3) H205 Budget							
<small>Please include all backup correspondence, purchase order, quotes, meeting minutes, emails, etc... If any of this information is confidential and cannot be released publically, please denote a check in this field: _____</small>							
Clerk/Legal/Finance Approval:							
Notes:							
Name:	Date of Approval:						

RESOLUTION AUTHORIZING A PROFESSIONAL SERVICES AGREEMENT WITH GPRS FOR LEAK DETECTION SERVICES AND APPROPRIATING FUNDS FROM CAPITAL PROJECT H205

WHEREAS, the City of Lockport operates and maintains an extensive water distribution system; and

WHEREAS, the City has identified the need to locate potential water leaks within the system in order to reduce water loss, improve system efficiency, and prevent further infrastructure deterioration; and

WHEREAS, Ground Penetrating Radar Systems, LLC (GPRS) has submitted a proposal to perform leak detection services utilizing specialized equipment and techniques to identify the location of known or suspected leaks within the City's water system; and

WHEREAS, said services generally consist of listening for and pinpointing underground water leaks using acoustic and electronic detection methods, allowing City staff to more efficiently identify and repair problem areas; and

WHEREAS, the total cost of the proposed services is an amount not to exceed \$20,000; and

WHEREAS, these services constitute professional and technical services which are not subject to competitive bidding requirements pursuant to the City's procurement policy and applicable New York State law; and

WHEREAS, funding for said services is available within the City's Sewer Capital Project H205;

NOW, THEREFORE, BE IT RESOLVED, that the Common Council of the City of Lockport hereby authorizes the Mayor to enter into an agreement with Ground Penetrating Radar Systems, LLC (GPRS) for leak detection services in an amount not to exceed \$20,000; and be it further

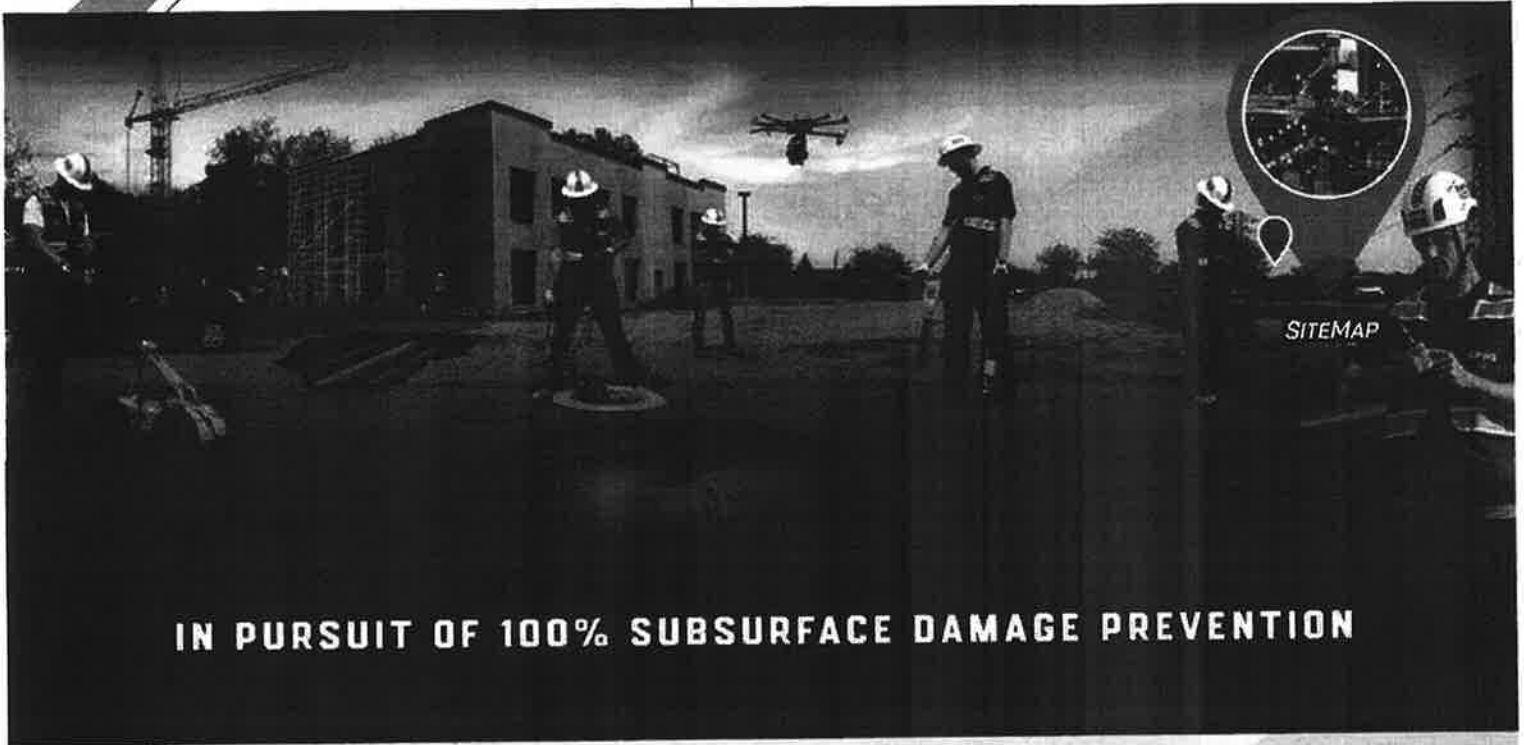
RESOLVED, that the Common Council hereby determines that such services are of a professional and technical nature and are therefore exempt from competitive bidding requirements; and be it further

RESOLVED, that the expenditure of up to \$20,000 is hereby authorized from Capital Project H205 to fund said services


City of Lockport



PROPOSAL



IN PURSUIT OF 100% SUBSURFACE DAMAGE PREVENTION

 UTILITY LOCATING

 CONCRETE IMAGING

 3D LASER SCANNING

 VIDEO PIPE INSPECTION

 MAPPING & MODELING

 LEAK DETECTION

GPRS Intelligently Visualizes The Built World® above and below ground for customers who need accurate, efficient damage prevention, existing condition as-built documentation, or project & facility management tools. Our elite nationwide team of Project Managers are experts in locating buried infrastructure, reality capture, and mapping – delivered via SiteMap®, our digital visualization software platform, with a 99.8% accuracy rate in utility locating and concrete imaging – thanks to our industry-leading Subsurface Investigation Methodology (SIM).

**INTELLIGENTLY
VISUALIZING**
////// THE BUILT WORLD

March 27, 2026

Client: City of Lockport

Project Address: 3556 LakeShore Road Buffalo, NY 14219

Quote Number: GPRSQUOTE-262035

GPRS Opportunity Name/Number: Lockport, NY - 100 Mile Leak Survey

Submitted By:

Kyle Tracy

To schedule, please email:

newyorkinfo@gprsinc.com

GPRS appreciates the opportunity to provide this proposal. We encourage you to visit our website (www.gprsinc.com) and contact any of the numerous references listed. Our insurance certificate and W-9 can also be downloaded [here](#). Please feel free to contact us if you have any questions or need additional information. Visit for an overview of our industry-leading best practices.

SCOPE OF WORK

Leak Survey: We understand the scope of this project is to provide the City of Lockport with an acoustic leak survey of its approximately 100-mile water distribution system. Due to access limitations at curb stops located on private property, acoustic testing of individual service lines will not be performed. As a result, GPRS will be unable to definitively distinguish whether identified leak signals originate from the water main or associated service lines. Acoustic listening devices will instead be utilized on accessible contact points to identify areas of concern within the system, which may require further investigation by the City to confirm exact leak locations.

Prior to our arrival on site, please provide a representative to meet with our team to review the scope of work and identify the desired survey areas.

The effectiveness of leak detection will depend on several variables, including pipe depth, pipe material, and ambient noise interference from traffic, machinery, or other sources. In areas with elevated noise levels. Please visit www.slmspec.org for an overview of our industry-leading best practices that will be applied to this project.

- GPRS is not responsible for housekeeping. Any debris, equipment, or other obstructions in the area at the time of scanning could potentially block out needed data.
- A thorough utility search can only be completed if GPRS is given access to all utility structures, interior and exterior. This service is never a replacement for the use of the state One Call system (811).
- All of our technicians have OSHA-10 safety training or greater. Site-specific safety training is not included in this quote. Please notify us if this project requires additional safety training.

EQUIPMENT

- **Underground Scanning GPR Antenna.** This GPR Antenna uses frequencies ranging from 250 MHz to 450 MHz and is mounted in a stroller frame that rolls over the surface. Data is displayed on a screen and marked in the field in real-time. The surface needs to be reasonably smooth and unobstructed to obtain readable scans. Obstructions such as curbs, landscaping, and vegetation will limit the efficacy of GPR. The total effective scan depth can be as much as 8' or more with this antenna but can vary widely depending on the soil conditions and composition. Some soil types, such as clay, may limit maximum depths to 3' or less. As depth increases, targets must be larger to be detected, and non-metallic targets can be challenging to locate. The depths provided should always be treated as estimates as their accuracy can be affected by multiple factors. For more information, please visit: [Link](#)
- **Electromagnetic Pipe Locator.** This receiver can passively detect the signals from live AC power or radio signals traveling along some conductive utilities. Operators can connect a transmitter directly to accessible metallic pipes, risers, or tracer wires to generate a current at a specific frequency. The receiver can then detect the resulting signal along the pipe or tracer wire. Various factors may impact this device's effectiveness, including (but not limited to) access to the utility, conductivity, grounding, and interference from other utilities. The depths provided should always be treated as estimates as their accuracy can be affected by multiple factors. For more information, please visit: [Link](#)
- **Traceable Rodder.** The rodder consists of a copper wire encased in fiberglass. This device is pushed through a pipe with direct access, such as a sewer line at a cleanout or a storm drain catch basin. Operators then induce a current on the wire and trace the signal from the surface. The maximum traceable depth is 10' depending on the soil conditions, and the maximum distance is 200'. Inserting the rodder into deeper pipes within manholes may not be feasible depending on site conditions. GPRS will not access electrical conduits. The signal is not detectable through metallic pipes. For more information, please visit: [Link](#)

- **GPS.** This handheld unit offers accuracy down to 4 inches; however, the accuracy achieved will depend on the satellite environment at the time of collection and is not considered survey-grade. Features can be collected as points, lines, or areas and then exported as a KML/KMZ or overlaid on a CAD drawing. For more information, please visit: [Link](#)
- **Leak Noise Amplification.** The Leak Noise Amplification system consists of a control unit, a microphone, and headphones. It is used to listen for leak noise at water system contact points (valves, hydrants, etc.) to identify a general location of a potential water leak. This system may also be used with a ground microphone to attempt to pinpoint the leak from the surface. Various factors may affect its effectiveness, such as pipe size and material, water pressure, leak size, soil type, and noise interference from traffic, machinery, etc.
- **Leak Noise Correlator.** The Leak Noise Correlator consists of sensors placed on water system contact points. The device will process sound signals between the contact points to provide a position of the leak between the two points. The Leak Noise Correlator's accuracy depends on the feasibility of locating the pipe and requires accurate information from the client regarding pipe attributes such as size and material.

PROJECT COSTS

SERVICE	DESCRIPTION
FIELD SERVICES	Described on Page 2 Not to exceed pricing of \$20,000
JOB SUMMARY REPORT	PDF including a brief description of equipment used, findings, limitations, and site photos sent at the conclusion of every job.
FORMAL REPORT	Detailed report of findings with photos, example data, and a site sketch (if applicable) in addition to the basic summary report that is included with every job. See example: Link
TOTAL	\$20,000.00

GENERAL TERMS & CONDITIONS

This proposal is subject to the General Terms and Conditions for Services of Ground Penetrating Radar Systems, LLC posted at [Link](#) (the "Terms and Conditions") and the Authorized User License Agreement for SiteMap® Accounts at [Link](#) and is hereby incorporated by reference into and made a part of this proposal. Customer acknowledges it has read and agrees to be bound by such Terms and Conditions. In the event of any conflict between the terms of this proposal and the Terms and Conditions, the Terms and Conditions will prevail.

- Customer agrees to meet and perform all requirements described in this document and has fully read and understands all items listed within this document.
- It is the customer's responsibility to prepare the site for scanning, including clearly identifying areas to be scanned, securing access to all areas required for scanning, removing and keeping these areas clear and free of obstructions. Delays caused by customer's failure to do so may result in an increased price.
- GPRS does not conduct an investigation, analysis, or interpretation of soil composition, soil/concrete conditions, or geophysical, geological, engineering, or land surveying information. The customer acknowledges understanding that we are merely reporting retrieved data and that we do NOT provide geophysical, geological, engineering, or land surveying services. Customer should contact a professional in those fields if such services are needed. Data collected during may only be suitable for use within the scope of this proposal.
- If any work to be performed is within a road or street, unless specifically included by GPRS within this proposal, it is the customer's responsibility to provide adequate traffic control to allow GPRS' personnel to safely and efficiently work in the road/street.
- Time-on-site in excess of 8-hours will be billed at overtime rates.
- This price assumes that we will be given access to perform the work during normal, weekday business hours. Work performed outside of 6am-5pm Monday-Friday will be billed at overtime rates.
- These rates assume that there are no certified payroll or prevailing wage requirements for this work. If GPRS receives notice that any of these conditions exist, there will be additional costs.
- If this proposal is not accepted within 90 days of March 27, 2026, then the pricing may be subject to review.
- If for some reason the technician arrives on site and the work is cancelled there will be a charge of \$500 per requested technician.
- If your project is in WV, SD, NM, or HI: State sales tax is not included in the total on this proposal, but will be included on the invoice.
- Payment Terms are Net 30; or as specified if a current Master Service Agreement is in place. GPRS facilitates the use of ACH or bank-to-bank payment remittance at no cost. A convenience fee will be applied to payments made by credit card.

ACCEPTED AND AGREED

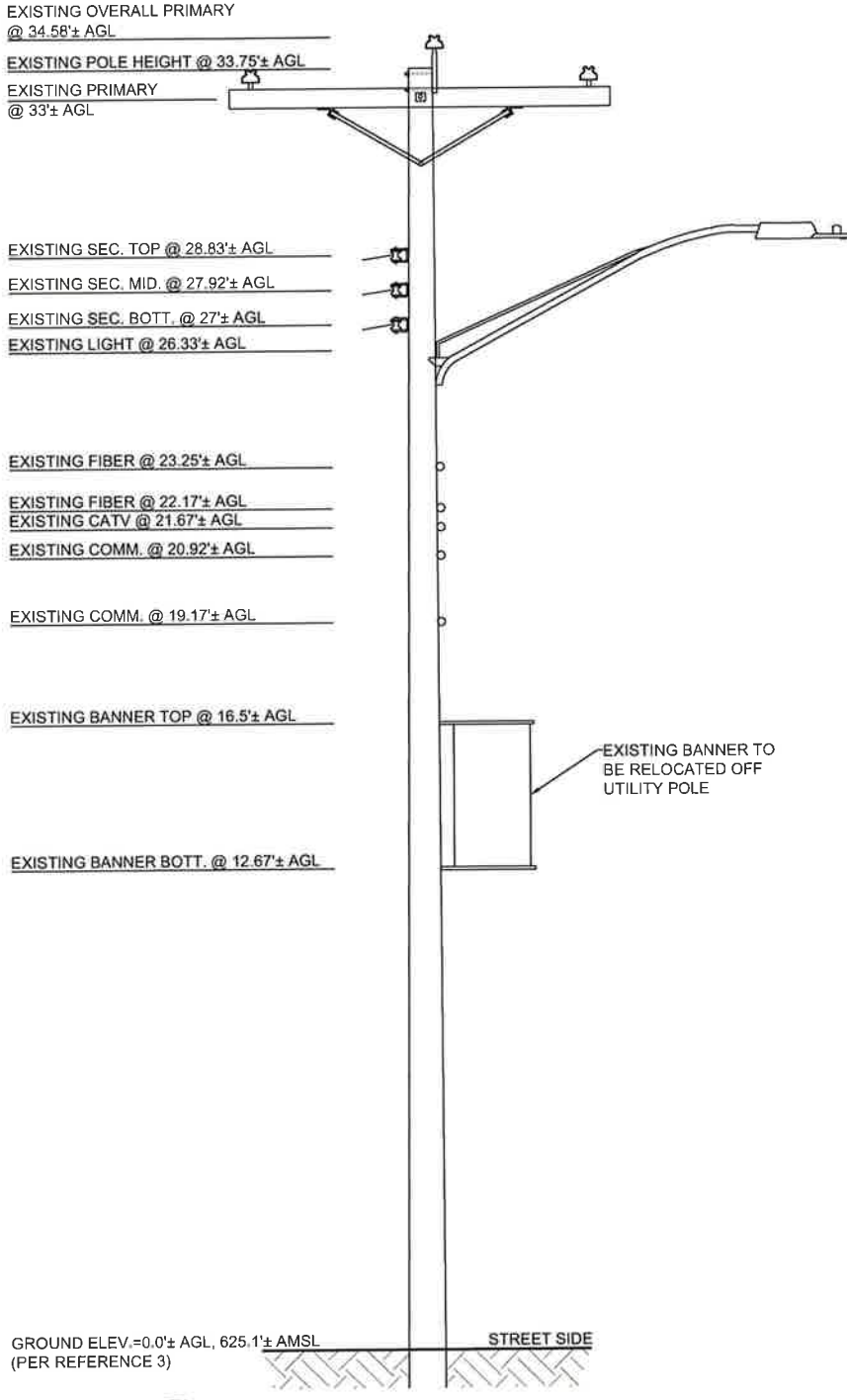
Print Name: _____ Signature: _____ Date: _____

Company Phone/Email: _____ PO #: _____ Job #: _____

Account	Account Description	Adopted Budget	Budget Amendments	Amended Budget	Current Month Transactions	YTD Encumbrances	YTD Transactions	Budget - YTD Transactions	% Used/ Rec'd
Fund H205 - Active, G Infra. Improvements									
REVENUE									
Department 8197 - Sewer Equipment & Cap Outlay									
32801	Interfund Revenue								
32801.A	Interfund Revenue From General Fund	.00	9,165.00	9,165.00	.00	.00	9,165.00	.00	100
32801.G	Interfund Revenue From Sewer Fund	.00	384,654.00	384,654.00	.00	.00	384,654.00	.00	100
32801 - Interfund Revenue Totals		\$0.00	\$393,819.00	\$393,819.00	\$0.00	\$0.00	\$393,819.00	\$0.00	100%
Department 8197 - Sewer Equipment & Cap Outlay Totals		\$0.00	\$393,819.00	\$393,819.00	\$0.00	\$0.00	\$393,819.00	\$0.00	100%
REVENUE TOTALS		\$0.00	\$393,819.00	\$393,819.00	\$0.00	\$0.00	\$393,819.00	\$0.00	100%
EXPENSE									
Department 8197 - Sewer Equipment & Cap Outlay									
52481	Infrastructure-Sewer System	.00	393,819.00	393,819.00	.00	.00	334,162.55	59,656.45	85
Department 8197 - Sewer Equipment & Cap Outlay Totals		\$0.00	\$393,819.00	\$393,819.00	\$0.00	\$0.00	\$334,162.55	\$59,656.45	85%
EXPENSE TOTALS		\$0.00	\$393,819.00	\$393,819.00	\$0.00	\$0.00	\$334,162.55	\$59,656.45	85%
Fund H205 - Active, G Infra. Improvements Totals									
REVENUE TOTALS		.00	393,819.00	393,819.00	.00	.00	393,819.00	.00	100%
EXPENSE TOTALS		.00	393,819.00	393,819.00	.00	.00	334,162.55	59,656.45	85%
Fund H205 - Active, G Infra. Improvements Totals		\$0.00	\$0.00	\$0.00	\$0.00	\$0.00	\$59,656.45	(\$59,656.45)	
-- Grand Totals									
REVENUE TOTALS		.00	393,819.00	393,819.00	.00	.00	393,819.00	.00	100%
EXPENSE TOTALS		.00	393,819.00	393,819.00	.00	.00	334,162.55	59,656.45	85%
Grand Totals		\$0.00	\$0.00	\$0.00	\$0.00	\$0.00	\$59,656.45	(\$59,656.45)	

<p>MAKE READY WORK ORDER (NYSEG)</p> <p>REPLACE 40' POLE WITH 50-2' (45' BASIS) AT APPLICANT'S EXPENSE</p> <p>INSTALL CROSSARM @ 42-0</p> <p>TRANSFER SECONDARIES @ 33-4, 34-0, 34-8</p> <p>TRANSFER RISER @ 32-10, DRESS DRIP LOOP TO TOP OF RISER</p> <p>INSTALL BOTTOM OF ANTENNA BRACKET @ 29-6, BUILD TO BUILD TO TM2 23.30 STD</p> <p>TRANSFER STREET LIGHT @ 25-0, INSTALL OVERALL JACKETED CABLE OR WIRE IN FLEXIBLE CONDUIT AND BOND STREET LIGHT</p> <p>TRANSFER COMMS WITH 12" SPACING BELOW BELL ATLANTIC @ 23-0</p> <p>BELL ATLANTIC ATTACH @ 24-0</p> <p>PULL OLD POLE</p>
<p>LICENSE PROJECT#: LEVAN AVE</p> <p>WORK REQUEST #10301196829</p>
<p>ELECTRIC SERVICE REQUEST # 10301221389</p> <p>PHONE NUMBER: 1-800-572-1111</p>

ANTENNA EQUIPMENT VOLUME	
CANTENNA	2.32 CF
EQUIPMENT CABINET	15.84 CF
ELECTRIC PANEL	0.28 CF



1 EXISTING UTILITY POLE (PHOTO)
Z-3 SCALE: N.T.S.

2 EXISTING UTILITY POLE ELEVATION
Z-3 SCALE: N.T.S.

VERIZON WIRELESS HAS PERFORMED A RADIO FREQUENCY COMPLIANCE EVALUATION FOR THIS CELL SITE AND BASED ON THE RESULT OF THE EVALUATION THIS SITE IS COMPLIANT WITH FCC GUIDELINES.

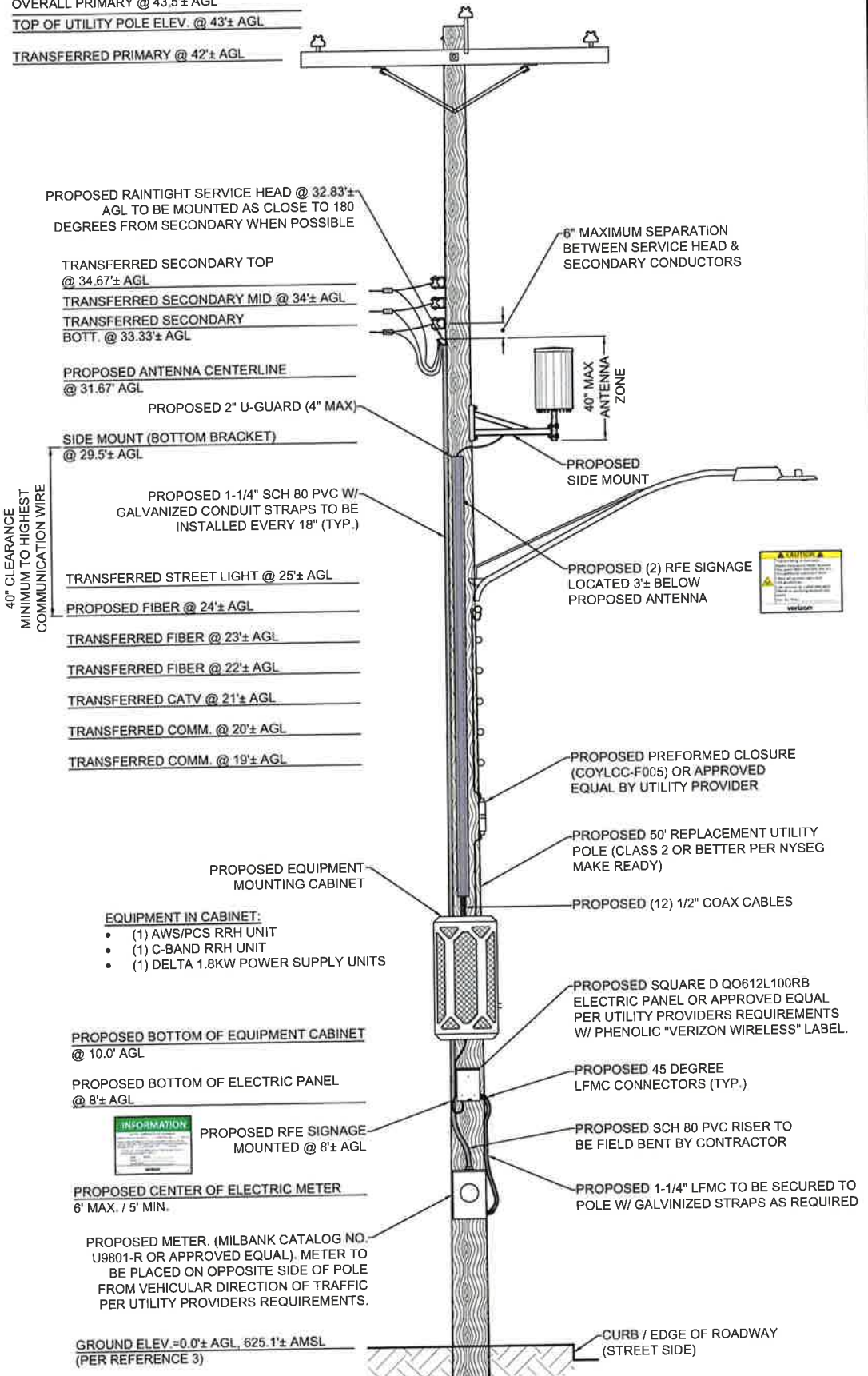


1275 JOHN STREET, SUITE #100
WEST HENRIETTA, NEW YORK 14586



• CIVIL ENGINEERING
• LAND SURVEYING
• LANDSCAPE ARCHITECTURE
217 LAKE AVENUE
ROCHESTER, NY 14608
(585) 458-9020

OVERALL PRIMARY @ 43.5± AGL
TOP OF UTILITY POLE ELEV. @ 43± AGL
TRANSFERRED PRIMARY @ 42± AGL



NO.	DATE	BY	COMMENTS
0	10/28/2025	BPK	ISSUED PRELIMINARY FOR APPROVAL
1	11/13/2025	BPK	ISSUED FINAL
2			
3			
4			
5			
6			
7			

PROJECT MANAGER: C.D.M. DRAWN BY: B.P.K.



COPYRIGHT 2025
COSTICH ENGINEERING, D.P.C.
IT IS A VIOLATION OF LAW FOR ANY PERSON, UNLESS ACTING UNDER THE DIRECTION OF A LICENSED PROFESSIONAL ENGINEER, LAND SURVEYOR, ARCHITECT OR LANDSCAPE ARCHITECT, TO ALTER ANY ITEM ON THIS DOCUMENT IN ANY WAY. ANY LICENSEE WHO ALTERS THIS DOCUMENT IS REQUIRED BY LAW TO AFFIX HIS/HER SEAL AND THE NOTATION "ALTERED BY," FOLLOWED BY HIS/HER SIGNATURE AND SPECIFIC DESCRIPTION OF THE ALTERATION, TO THE DOCUMENT.

SITE INFORMATION
LEVAN AVE
ZONING DRAWINGS
PROJECT ID: #17528428
MDG LOCATION ID: 5000348182

CITY OF LOCKPORT
COUNTY OF NIAGARA
STATE OF NEW YORK

SHEET TITLE
EXISTING AND PROPOSED UTILITY POLE ELEVATIONS

C.E. JOB NUMBER: 9118.01 SHEET NUMBER: Z-3

- EQUIPMENT IN CABINET:
- (1) AWS/PCS RRH UNIT
 - (1) C-BAND RRH UNIT
 - (1) DELTA 1.8KW POWER SUPPLY UNITS

PROPOSED BOTTOM OF EQUIPMENT CABINET @ 10.0' AGL

PROPOSED BOTTOM OF ELECTRIC PANEL @ 8± AGL




PROPOSED RFE SIGNAGE MOUNTED @ 8± AGL

PROPOSED CENTER OF ELECTRIC METER 6' MAX. / 5' MIN.

PROPOSED METER. (MILBANK CATALOG NO. U9801-R OR APPROVED EQUAL). METER TO BE PLACED ON OPPOSITE SIDE OF POLE FROM VEHICULAR DIRECTION OF TRAFFIC PER UTILITY PROVIDERS REQUIREMENTS.

GROUND ELEV. = 0.0± AGL, 625.1± AMSL (PER REFERENCE 3)



 COSTICH	Costich Engineering Land Surveying Landscape Architecture 217 LAKE AVENUE ROCHESTER, NY 14608 (585) 458-3020	PROJECT NAME Levan Ave.	PHOTO DESCRIPTION View of existing pole adjacent to 485 East Ave.	DATE OF PHOTO 10/27/2025
		Photo 1	PHOTO LOCATION View NE from East Ave., SR 31 190' from site	C.E. JOB# 9118.01
		PHOTO COORDINATES 43.17589000° N, 78.67212400° W		Project ID 17528428



Costich Engineering
Land Surveying
Landscape Architecture

COSTICH

217 LAKE AVENUE
ROCHESTER, NY 14608
(585) 458-3020

PROJECT NAME

Levan Ave.

Photo 1

PHOTO COORDINATES

43.17589000° N, 78.67212400° W

PHOTO DESCRIPTION

**Photosimulation of proposed
pole mounted cellular equipment**

PHOTO LOCATION

**View NE from East Ave., SR 31
190' from site**

DATE OF PHOTO

10/27/2025


C.E. JOB#

9118.01

Project ID

17528428



 COSTICH	Costich Engineering Land Surveying Landscape Architecture 217 LAKE AVENUE ROCHESTER, NY 14608 (585) 458-3020	PROJECT NAME Levan Ave.	PHOTO DESCRIPTION View of existing pole adjacent to 485 East Ave.	DATE OF PHOTO 10/27/2025
		Photo 2	PHOTO LOCATION View N from Levan Ave. 185' from site	C.E. JOB# 9118.01
		PHOTO COORDINATES 43.17579900° N, 78.67130300° W		Project ID 17528428



Costich Engineering
 Land Surveying
 Landscape Architecture
 217 LAKE AVENUE
 ROCHESTER, NY 14608
 (585) 458-3020

COSTICH

PROJECT NAME

Levan Ave.

Photo 2

PHOTO COORDINATES

43.17579900° N, 78.67130300° W

PHOTO DESCRIPTION

**Photosimulation of proposed
 pole mounted cellular equipment**

PHOTO LOCATION

**View N from Levan Ave.
 185' from site**

DATE OF PHOTO

10/27/2025


C.E. JOB#

9118.01


Project ID

17528428



 COSTICH	Costich Engineering Land Surveying Landscape Architecture 217 LAKE AVENUE ROCHESTER, NY 14608 (585) 458-3020	PROJECT NAME Levan Ave.	PHOTO DESCRIPTION View of existing pole adjacent to 485 East Ave.	DATE OF PHOTO 10/27/2025
		Photo 3	PHOTO LOCATION View W from Veterans Memorial Park 218' from site	C.E. JOB# 9118.01
		PHOTO COORDINATES 43.17629100° N, 78.67077200° W		Project ID 17528428



 COSTICH	Costich Engineering Land Surveying Landscape Architecture 217 LAKE AVENUE ROCHESTER, NY 14608 (585) 458-3020	PROJECT NAME Levan Ave.	PHOTO DESCRIPTION Photosimulation of proposed pole mounted cellular equipment	DATE OF PHOTO 10/27/2025
		Photo 3	PHOTO LOCATION View W from Veterans Memorial Park 218' from site	C.E. JOB# 9118.01
		PHOTO COORDINATES 43.17629100° N, 78.67077200° W		Project ID 17528428